

Wireless @ Johns Hopkins

Wireless Configuration Guide:

Windows 7

Additional “hopkins” wireless network instructions and requirements for Windows XP, Vista, Mac OS X, and Linux can be found at:

<http://www.it.jhu.edu/networking/wireless/>

The Johns Hopkins Institutions offer the “**hopkins**” wireless network to faculty, staff, students, or anyone with a valid JHED ID. The “hopkins” wireless network utilizes the 256-bit Advanced Encryption Standard (AES), and Microsoft's Internet Authentication Service (IAS) for authentication, to provide a higher level of security and access.

Requirements for Windows 7:

1. The network card you purchase must support the 802.11b and/or 802.11g protocol(s) as well as support WiFi Protected Access (WPA).
2. You must have the current drivers for your network card which are usually available from the PC vendor's web site.

How do I find out my JHED account information?

The following steps will allow you to activate your JHED ID. You will need access to a wired (ethernet) connection.

Step 1: Open a web browser and go to <http://my.johnshopkins.edu>.

Step 2: Click the **First Time Logon** tab.


Step 3: Follow the instructions on the login page to find out your Login ID and to set your password.

Step 4: Click on **Change My Info** tab and fill in a valid email address. Click **Save**.

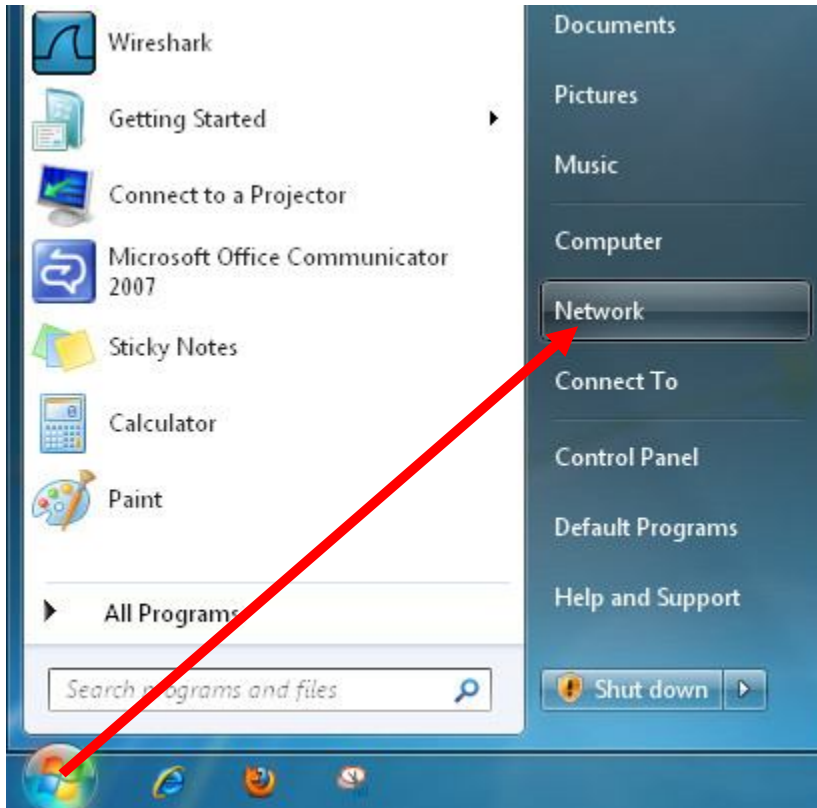
JHED account and Active Directory credentials should be the same except for some grandfathered accounts. If you have issues with signing in when asked for your User ID and password, please contact the Help Desk, (410) 955-HELP, to correct the issue.

Wireless @ Johns Hopkins

How to configure “hopkins” wireless for Windows 7:

Step 1: Click on the Start ICON .

Click on **Network** from the menu.

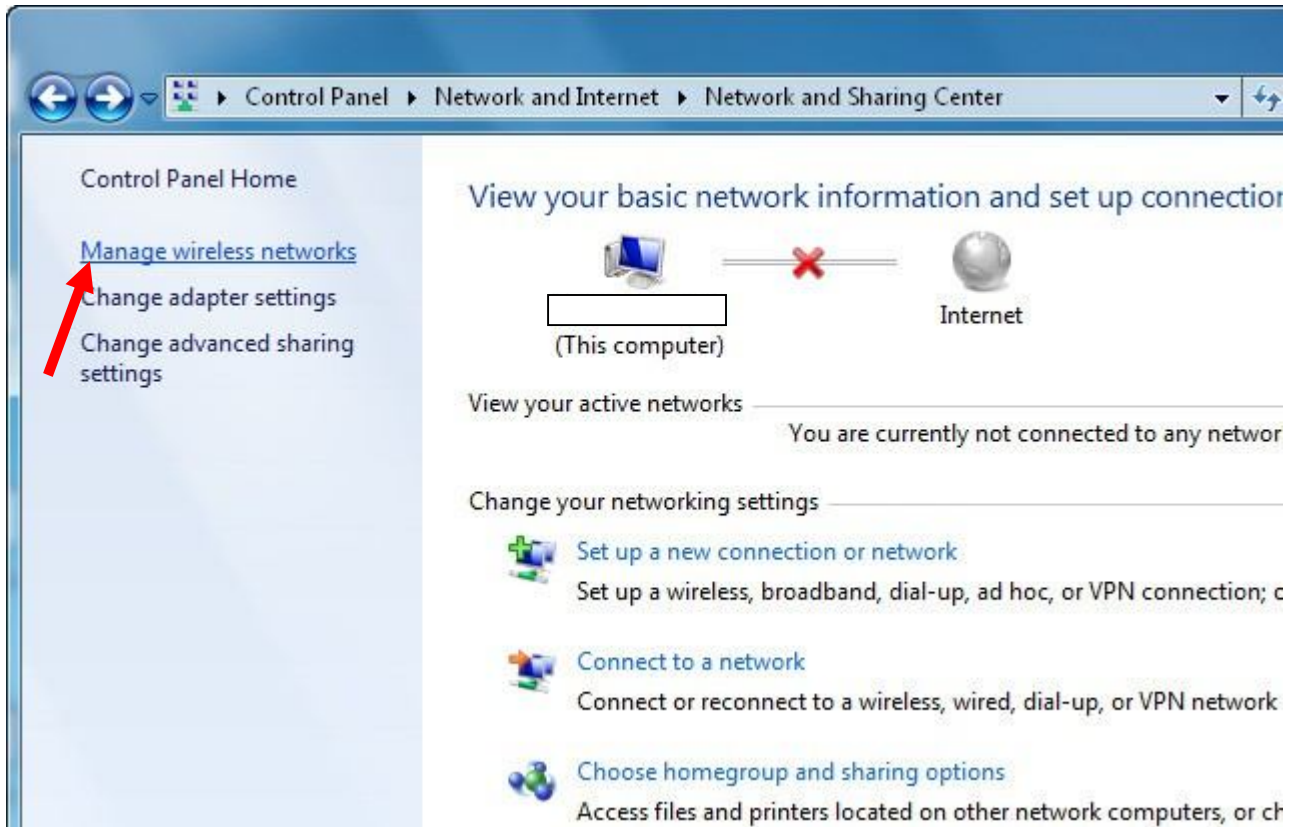


Step 2: Select **Network and Sharing Center**.



Wireless @ Johns Hopkins

Step 3: Select **Manage wireless networks**.

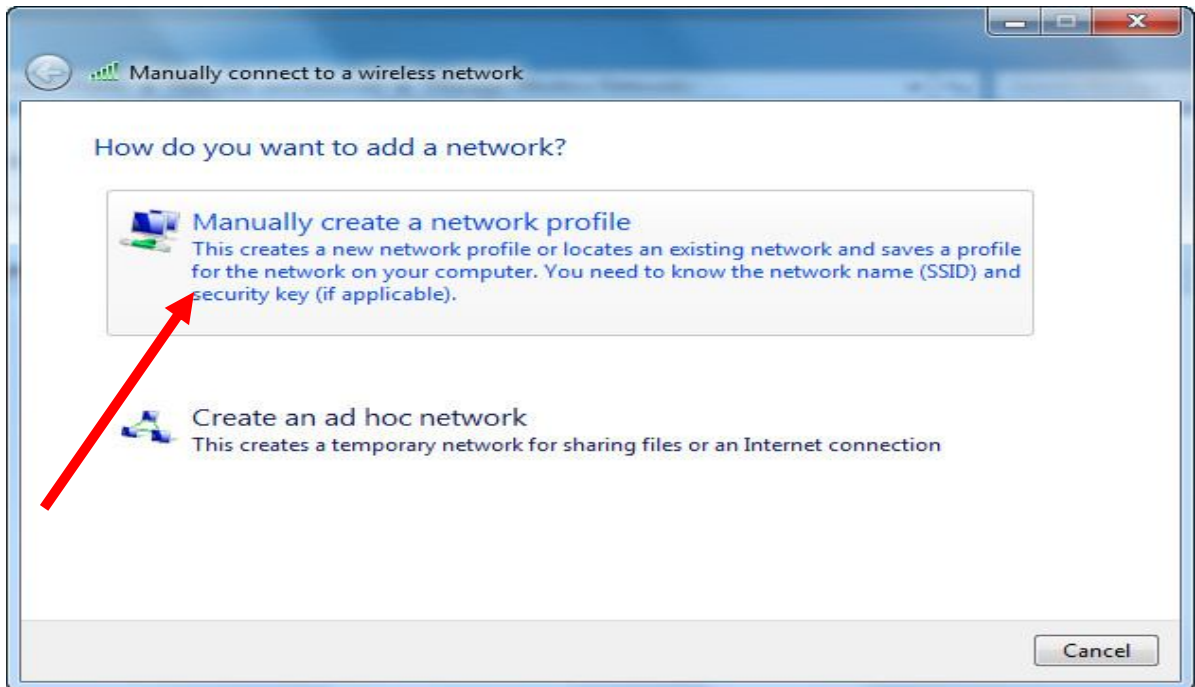


Step 4: Click **Add**.

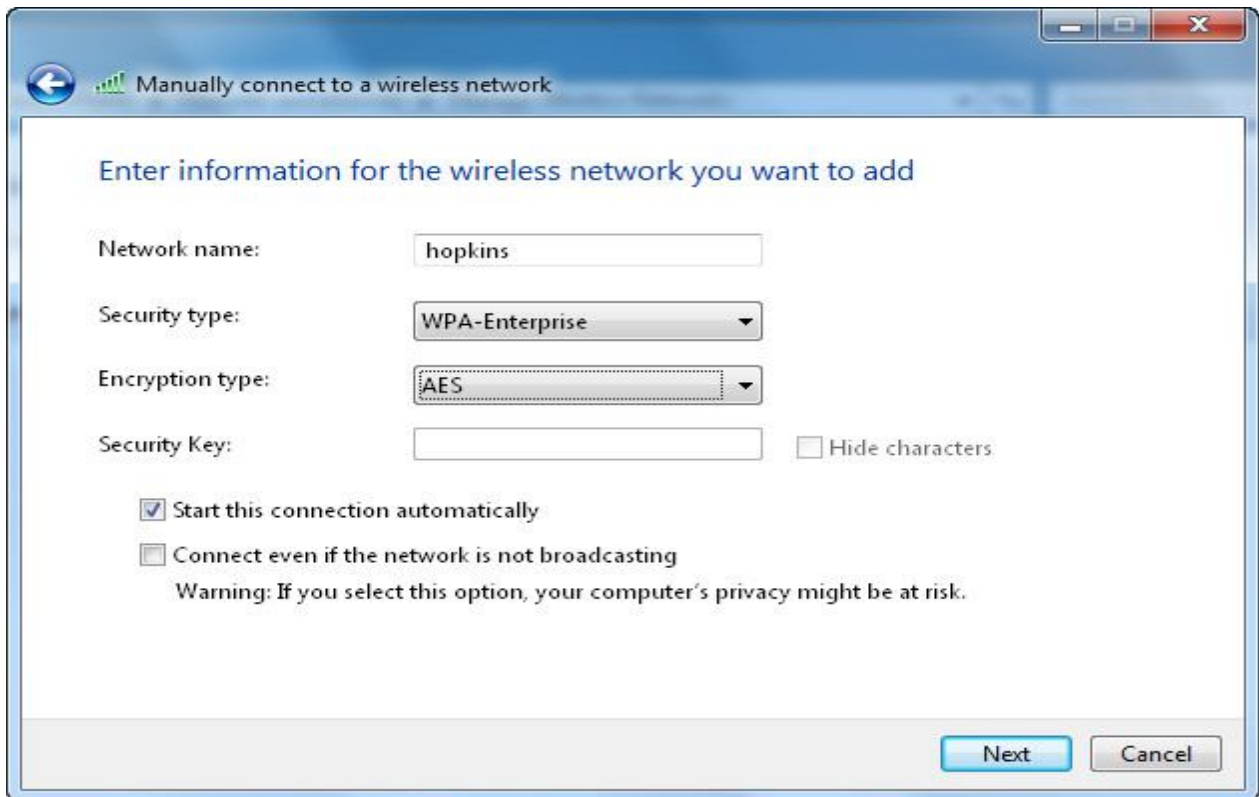


Wireless @ Johns Hopkins

Step 5: Select **Manually create a network profile**.

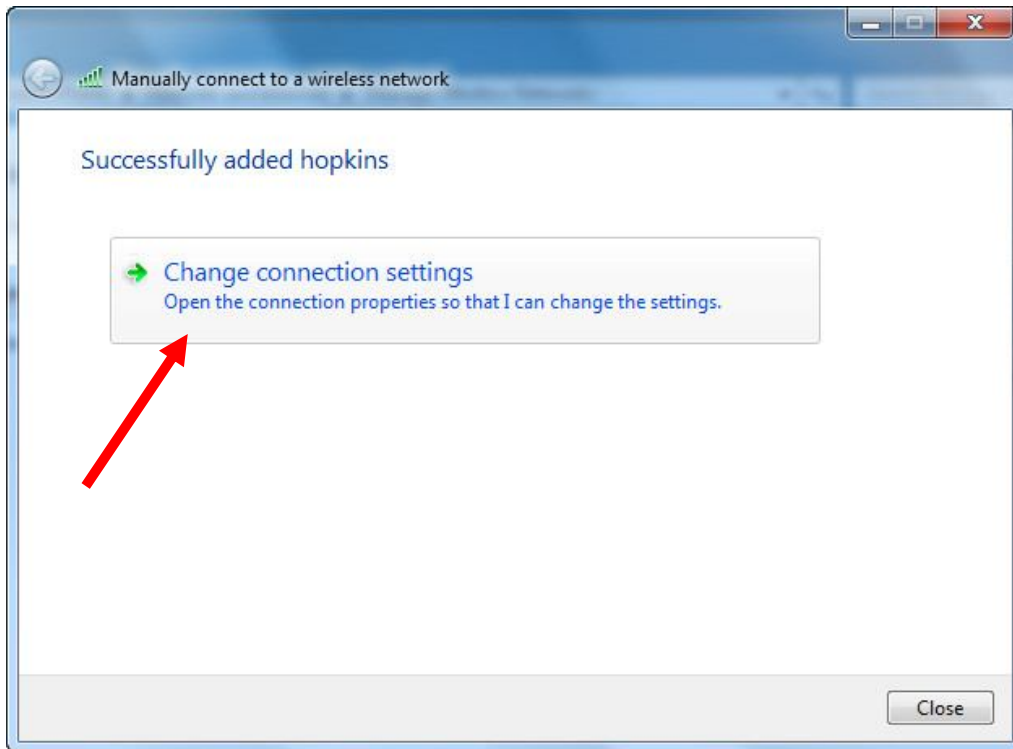


Step 6: For **Network name**, enter **hopkins**. For **Security type**, select **WPA-Enterprise**. For **Encryption type**, select **AES**. Click the **Next** button.



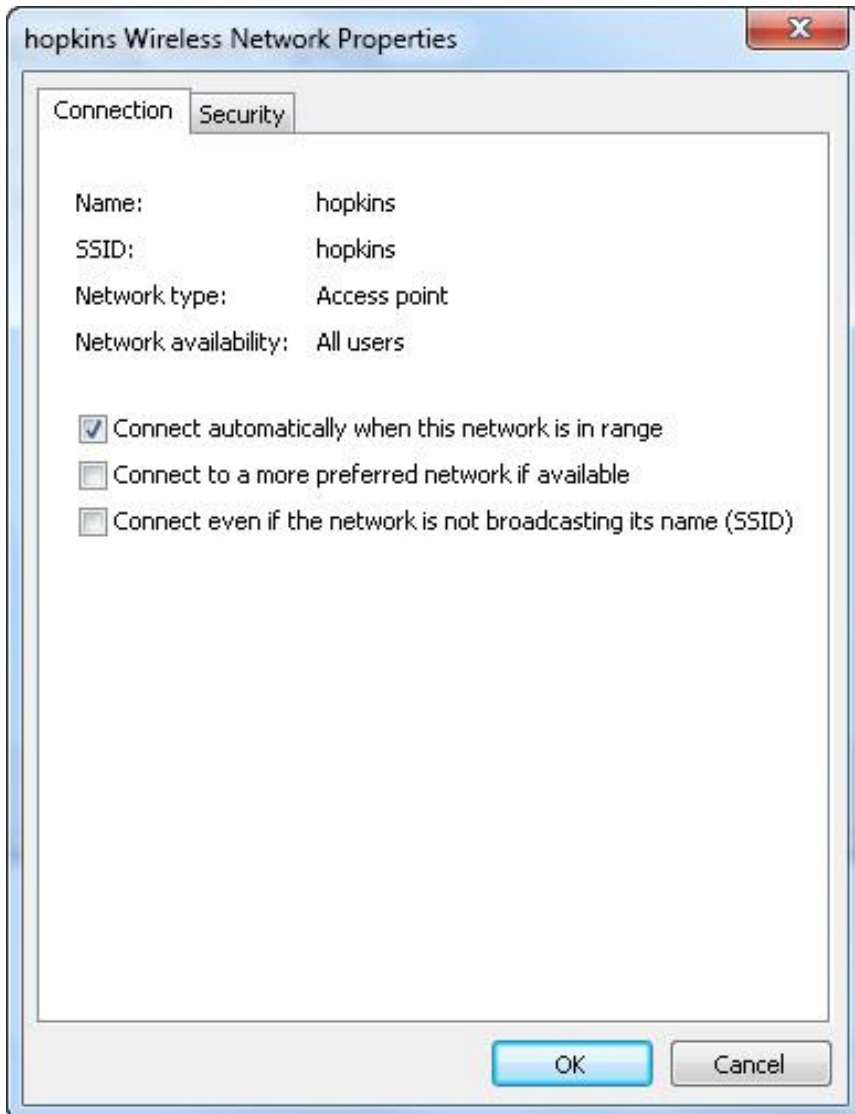
Wireless @ Johns Hopkins

Step 7: Select **Change connection settings**.



Wireless @ Johns Hopkins

Step 8: Make sure the first box is **checked**. Select the **Security** tab at top.



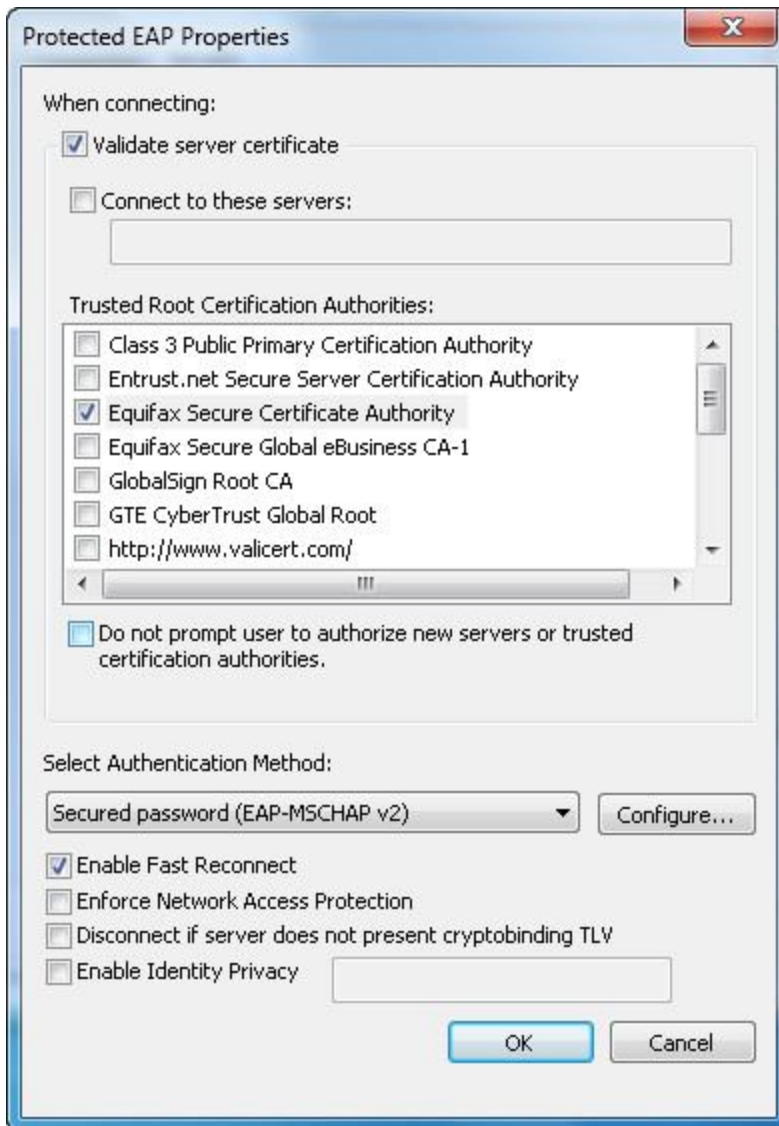
Wireless @ Johns Hopkins

Step 9: For **Security type**, select **WPA-Enterprise**. For **Encryption type**, select **AES**. Choose **PEAP** for **authentication method**. Check the box for “Cache user information.” Click on **Settings...**



Wireless @ Johns Hopkins

Step 10: Check “Validate Server Certificate.” Check “Equifax Secure Certificate Authority.” Select “Secured password EAP-MSCHAPV2.” Check “Enable Fast Reconnect.” Click on Configure...



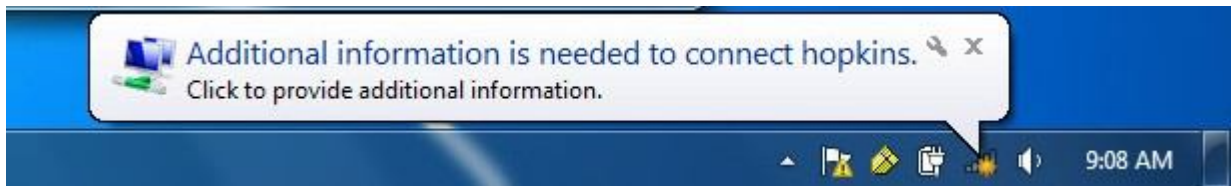
Wireless @ Johns Hopkins

Step 11: Uncheck the box next to “Automatically use my Windows logon” Click **OK**.



Click **OK** on Protected EAP properties box.
Click **OK** on hopkins wireless network properties.
Go to main desktop

Step 12: Click on the **Additional information is required to connect to hopkins**.



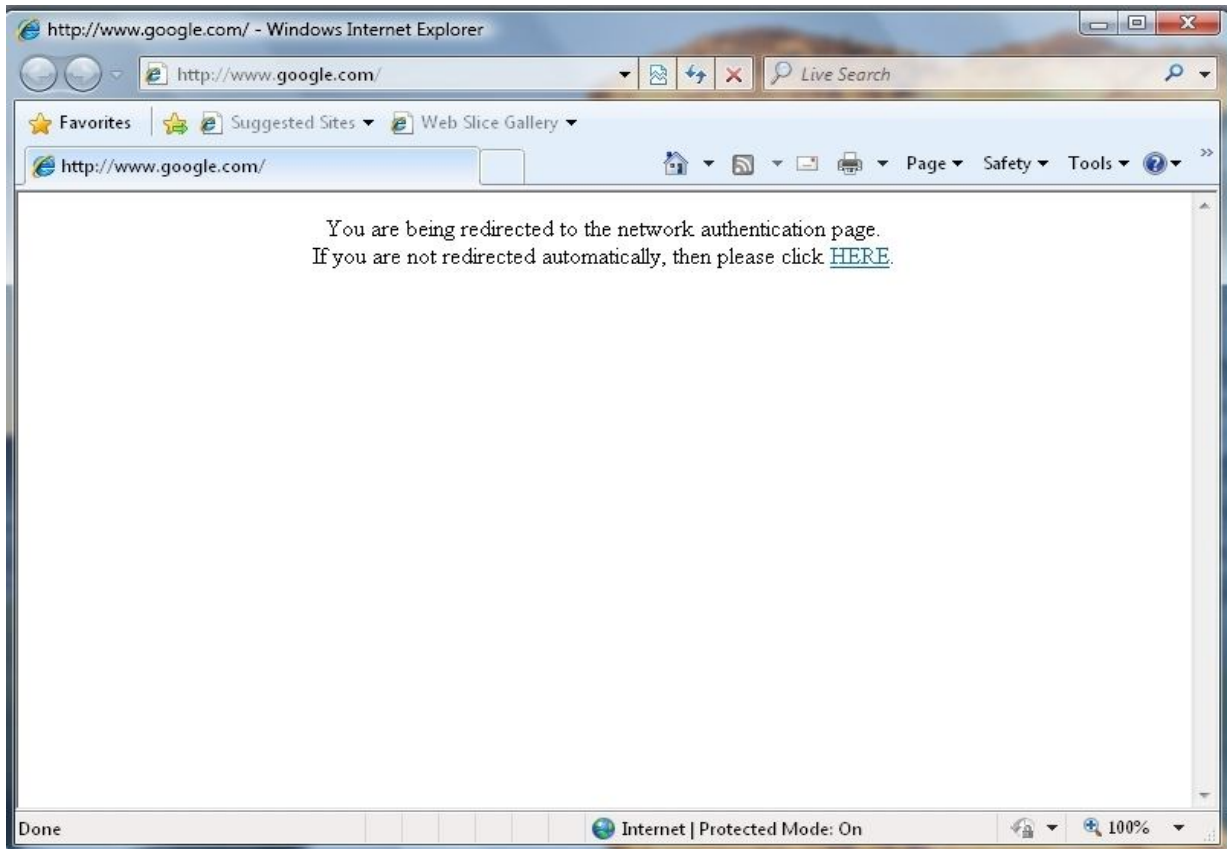
Step 13: For **User name**, enter your **JHED_ID**.
For **Password**, enter your **JHED password**.
For **Logon domain**, enter **WIN**.

Note: You may also be prompted to choose a location for this network.



Wireless @ Johns Hopkins

Step 14: Launch Internet Explorer, Firefox, or your favorite web browser to complete the logon process. You must have a valid URL, such as <http://www.google.com>. You will be redirected to your homepage, after a brief splash of the page below.

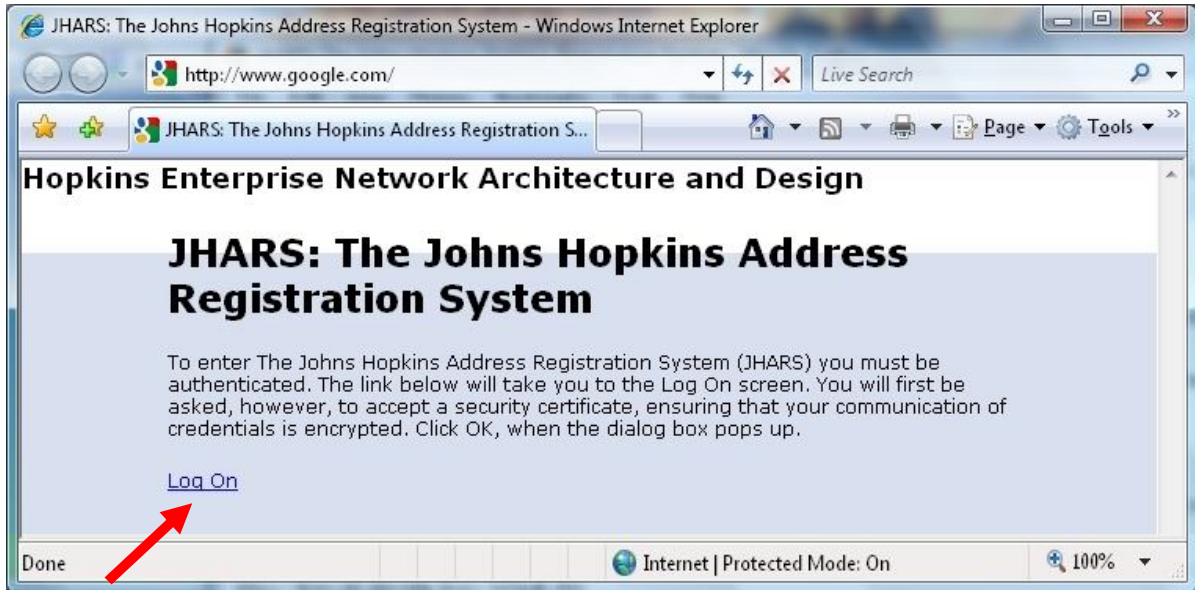


You are now on the network!

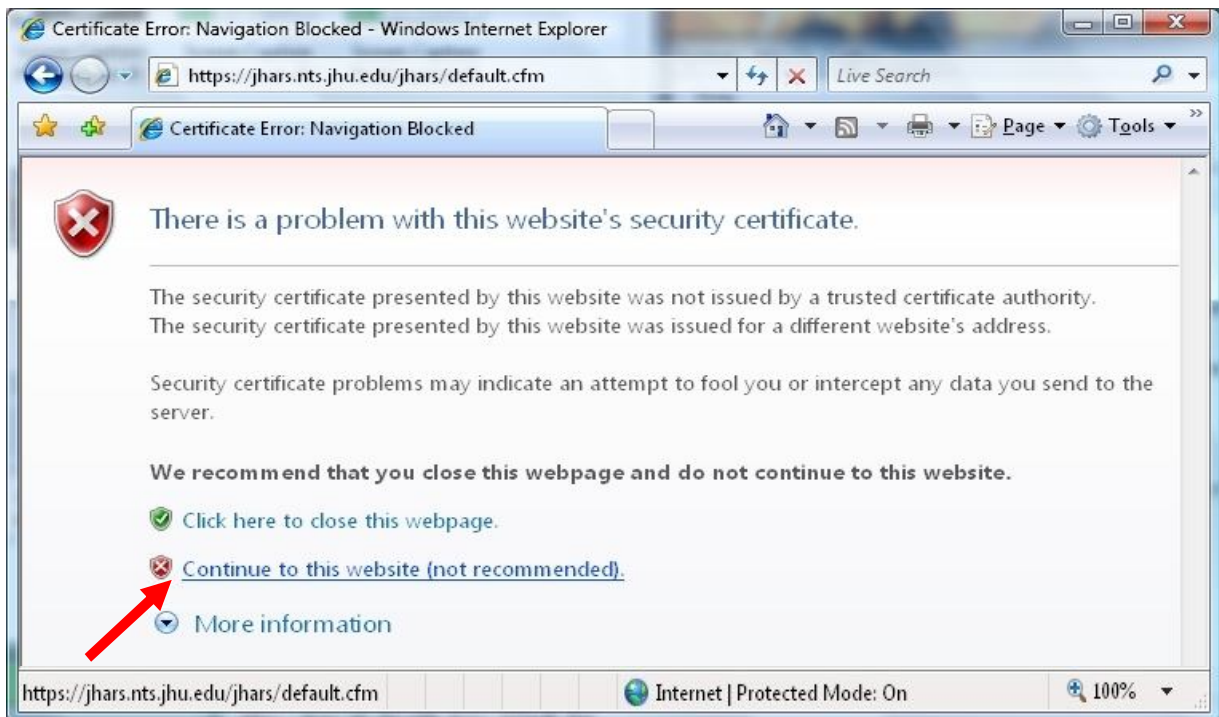
Wireless @ Johns Hopkins

JHARS Registration Required for First-Time Users:

Step 15: Open a new web browser window. If this is your FIRST time connecting to a wireless network at Johns Hopkins, you will be directed to our JHARS registration website. If you are not redirected, please type <http://jhars.nts.jhu.edu>. Click **Log On** to continue.

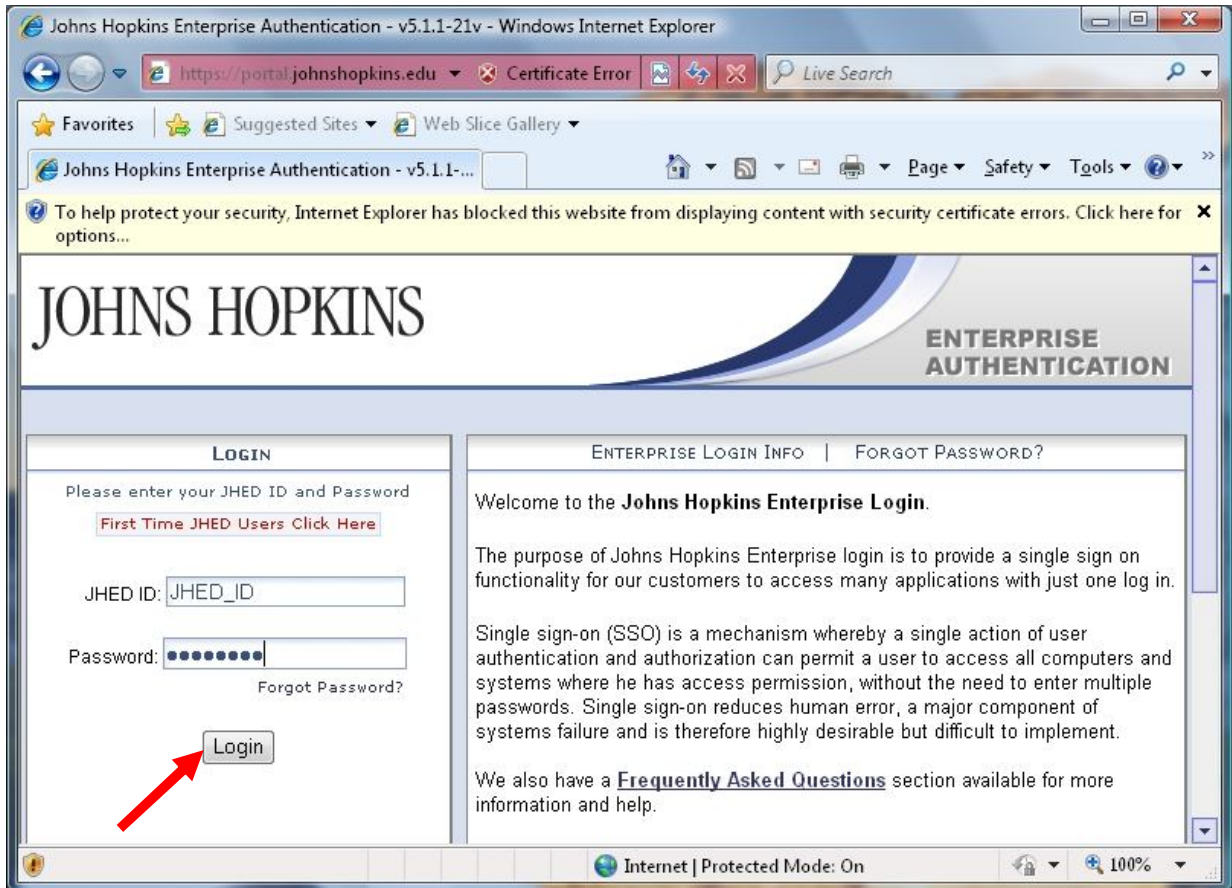


Step 16: You may be prompted by a certificate warning, depending on what version and type of web browser you are using. Please click **Continue to this website**.



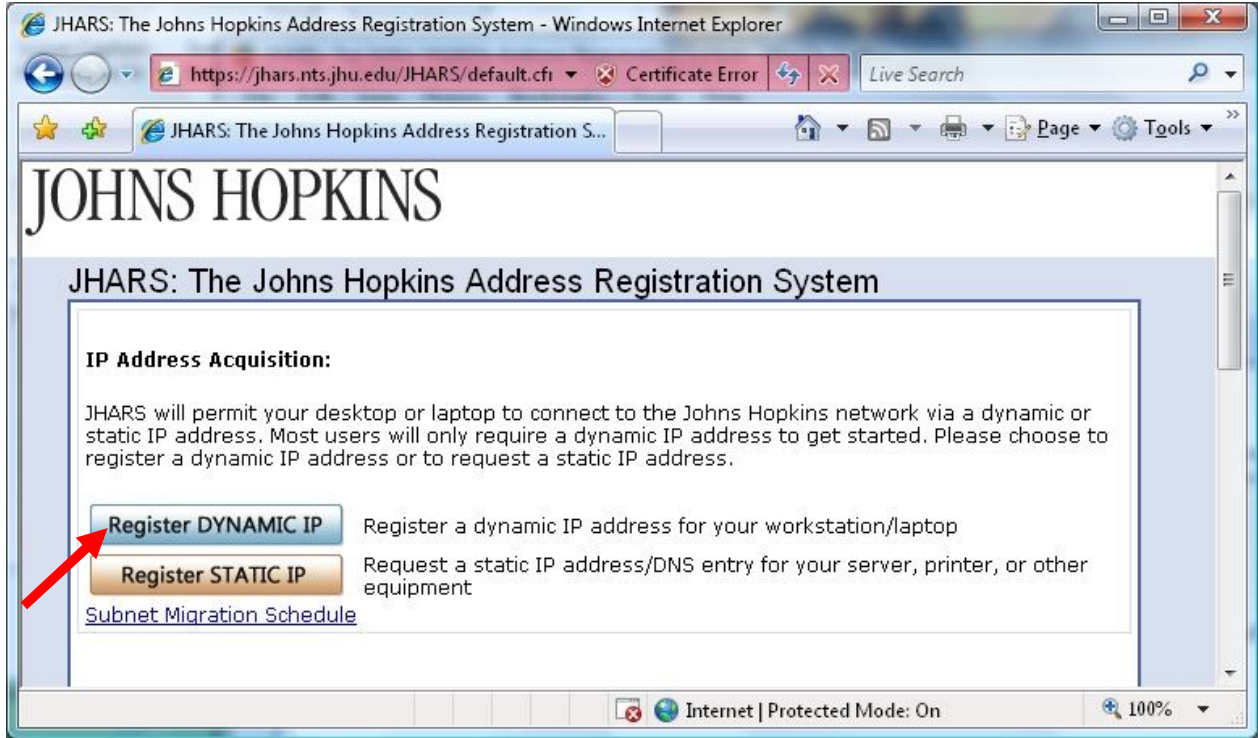
Wireless @ Johns Hopkins

Step 17: Enter your JHED logon credentials and click **Login** to access the registration process.

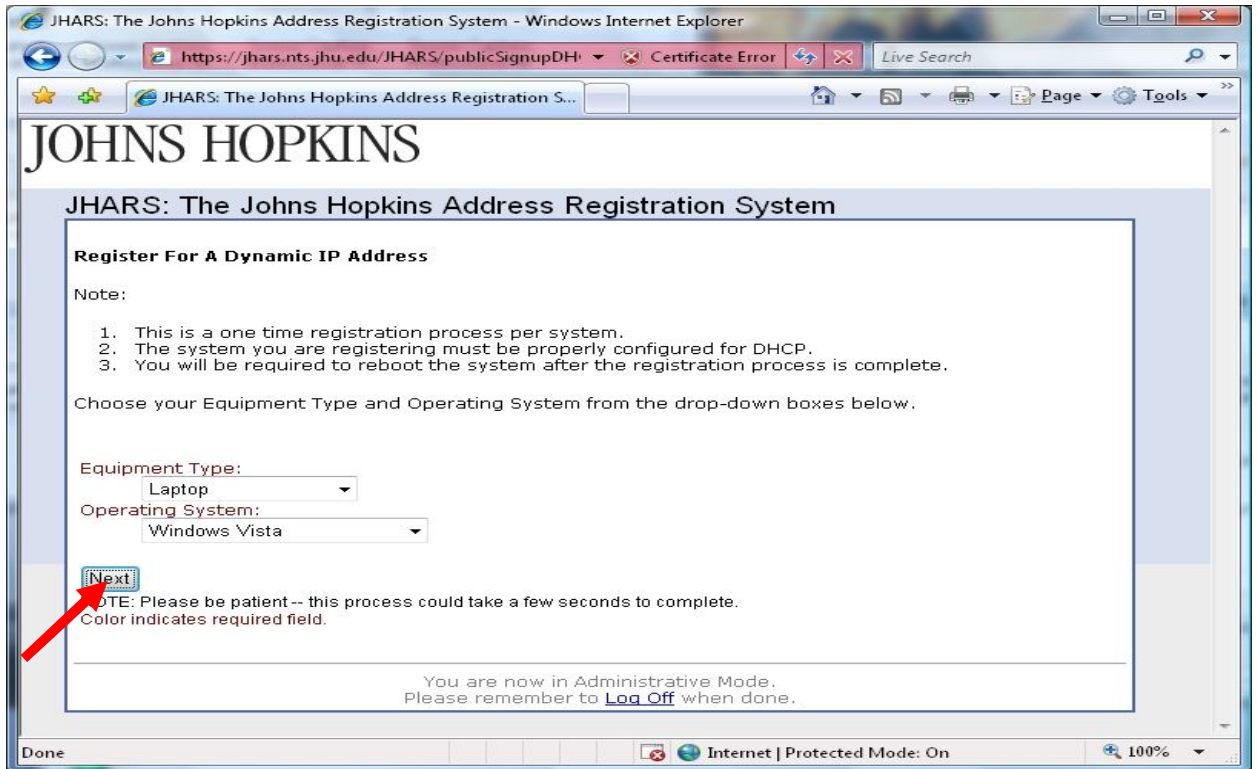


Wireless @ Johns Hopkins

Step 18: Click on **Register DYNAMIC IP**.

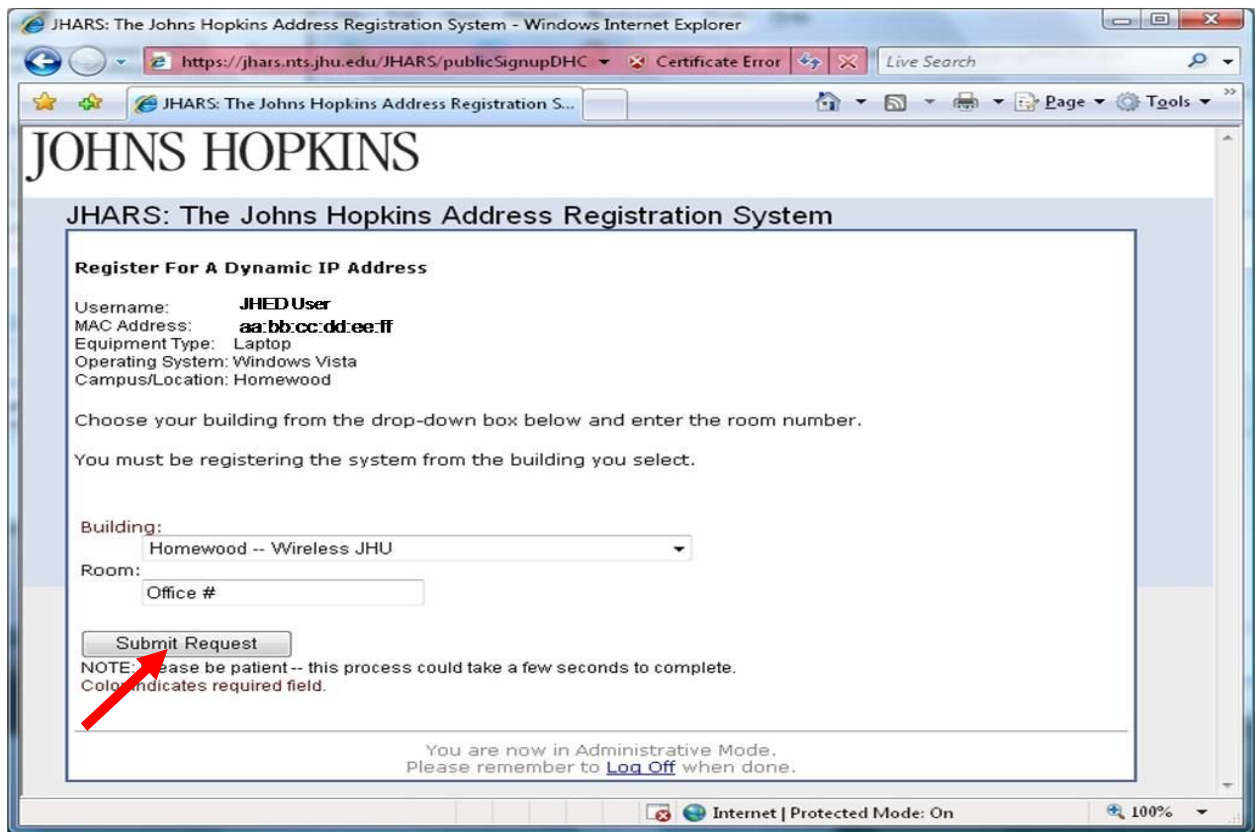


Step 19: Select your **Equipment Type and Operating System** and click **Next**.



Wireless @ Johns Hopkins

Step 20: For **Building**, select your campus and the Wireless option. For example: **Homewood – Wireless JHU**. For **Room**, please enter your office number, if applicable. Click **Submit Request**.



JHARS: The Johns Hopkins Address Registration System - Windows Internet Explorer

https://jhars.nts.jhu.edu/JHARS/publicSignupDHC Certificate Error Live Search

JHARS: The Johns Hopkins Address Registration S...

JOHNS HOPKINS

JHARS: The Johns Hopkins Address Registration System

Register For A Dynamic IP Address

Username: **JHED User**
MAC Address: **aa:bb:cc:dd:ee:ff**
Equipment Type: Laptop
Operating System: Windows Vista
Campus/Location: Homewood

Choose your building from the drop-down box below and enter the room number.
You must be registering the system from the building you select.

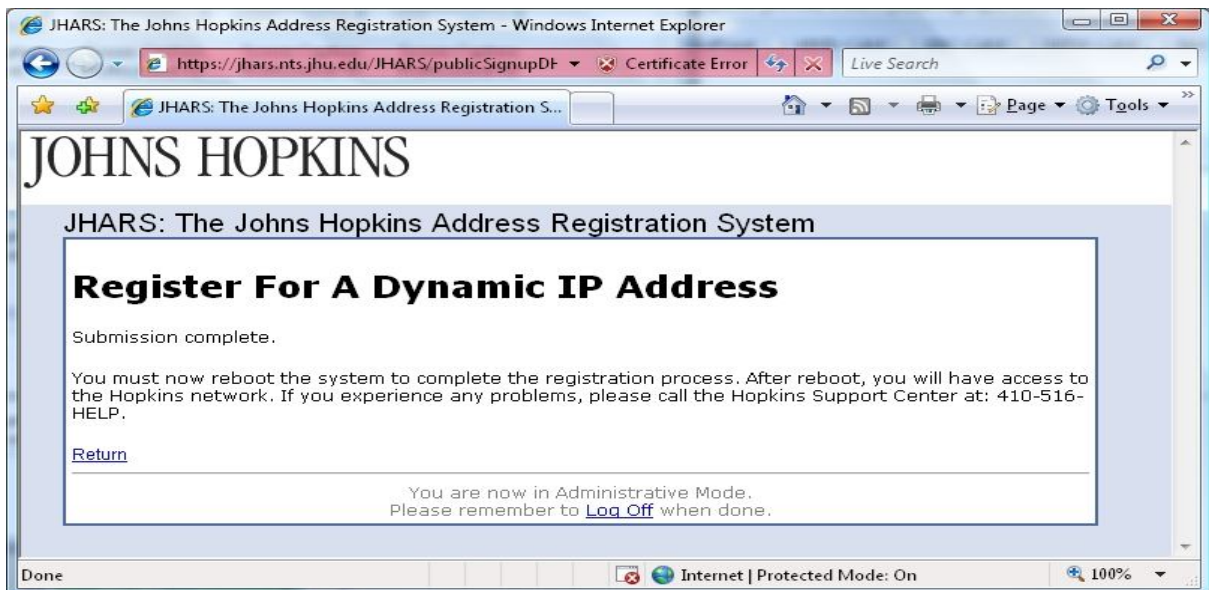
Building: Homewood -- Wireless JHU
Room: Office #

NOTE: Please be patient -- this process could take a few seconds to complete.
Color indicates required field.

You are now in Administrative Mode.
Please remember to [Log Off](#) when done.

Internet | Protected Mode: On 100%

Step 21: Please **Reboot** to conclude the registration process.



JHARS: The Johns Hopkins Address Registration System - Windows Internet Explorer

https://jhars.nts.jhu.edu/JHARS/publicSignupDHC Certificate Error Live Search

JHARS: The Johns Hopkins Address Registration S...

JOHNS HOPKINS

JHARS: The Johns Hopkins Address Registration System

Register For A Dynamic IP Address

Submission complete.

You must now reboot the system to complete the registration process. After reboot, you will have access to the Hopkins network. If you experience any problems, please call the Hopkins Support Center at: 410-516-HELP.

[Return](#)

You are now in Administrative Mode.
Please remember to [Log Off](#) when done.

Done Internet | Protected Mode: On 100%

Wireless @ Johns Hopkins

Where do I get additional help?

Technical Assistance

Garland Hall Basement
Hours M-F 8AM-5PM

Krieger Computer Lab

Krieger Hall Room 160
Hours Sunday 10AM-Friday
10PM, Saturday 10AM-10PM

Contact the Support Center at:

(410)955-HELP [(410)955-4357]	Johns Hopkins East Baltimore
(410)516-HELP [(410)516-4357]	Johns Hopkins Homewood Campus
(443)997-HELP [(443)997-4357]	Johns Hopkins Mount Washington