

## Wireless @ Johns Hopkins

### Wireless Configuration Guide:

### Kubuntu [KDE] (7.10 Gutsy Gibbon)(kernel 2.6.22)

Additional Hopkins Wireless Network Instructions and Requirements for Windows, Mac OS X, and Linux can be found at: <http://www.it.jhu.edu/networking/wireless/>

The Johns Hopkins Institutions offer the “**hopkins**” wireless network to faculty, staff, students, or anyone with a valid JHED ID. The “hopkins” wireless network utilizes the 256-bit Advanced Encryption Standard (AES), and Microsoft's Internet Authentication Service (IAS) for authentication, to provide a higher level of security and access. A program named Cisco Clean Access Agent will be resident to accommodate a behind the scenes handshake.

### Requirements for Linux:

1. The network card must support the 802.11b and/or 802.11g protocol(s) as well as support WiFi Protected Access (WPA).
2. You must have the current drivers for your network card, which are usually resident in the Linux kernel.

### How do I find out my JHED account information?

The following steps will allow you to activate your JHED ID. You will need access to a wired (ethernet) connection.

**Step 1:** Open a web browser and go to <http://my.johnshopkins.edu>.

**Step 2:** Click the **First Time Logon** tab.

**Step 3:** Follow the instructions on the login page to find out your Login ID and to set your password.

**Step 4:** Click on **Change My Info** tab and fill in a valid email address. Click **Save**.

JHED account and Active Directory credentials should be the same except for some grandfathered accounts. If you have issues with signing in when asked for your User ID and password, please contact the Help Desk, (410) 955-HELP, to correct the issue.

## Wireless @ Johns Hopkins

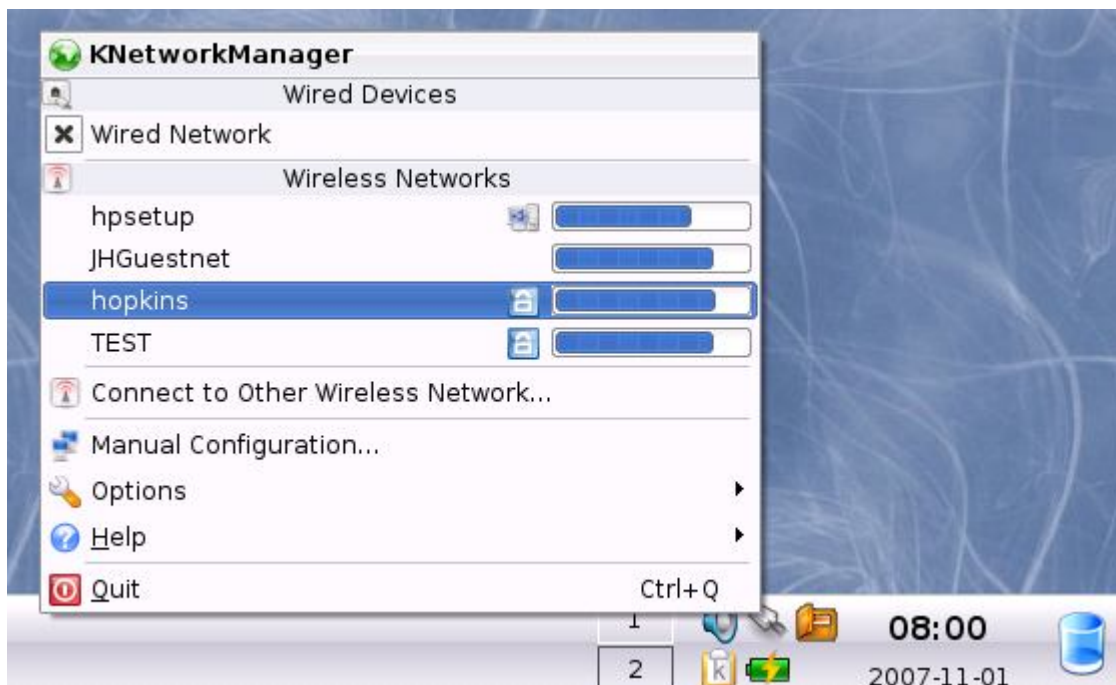
### How to configure “hopkins” for Kubuntu KDE (7.10 Gutsy Gibbon):

**NOTE:** The **Network Manager** applet in the GUI will be used to manage ALL network connections. This applet should be installed by default. If you don't have this application, you can download it using “Synaptic Package Manager”

**Step 1:** Right click on the Network Management icon on the bottom-right of the panel. It may look like an ethernet cable or wireless signal bars, depending upon your current connection.



**Step 2:** Click **hopkins** (if you see it), or **Connect to Other Wireless Network**.



## Wireless @ Johns Hopkins

**Step 3:** Set the parameters for the 'hopkins' network:

- For **Name (ESSID)**, type **hopkins**.
- For **Encryption**, select **WPA Enterprise**.
- For **EAP Method**, select **PEAP**.
- For **Phase Two**, select **MSCHAPV2**.
- In the **Identity** field, type your **JHED\_ID**
- In the **Password** field, type your **JHED password**.

Click the **Connect** button.

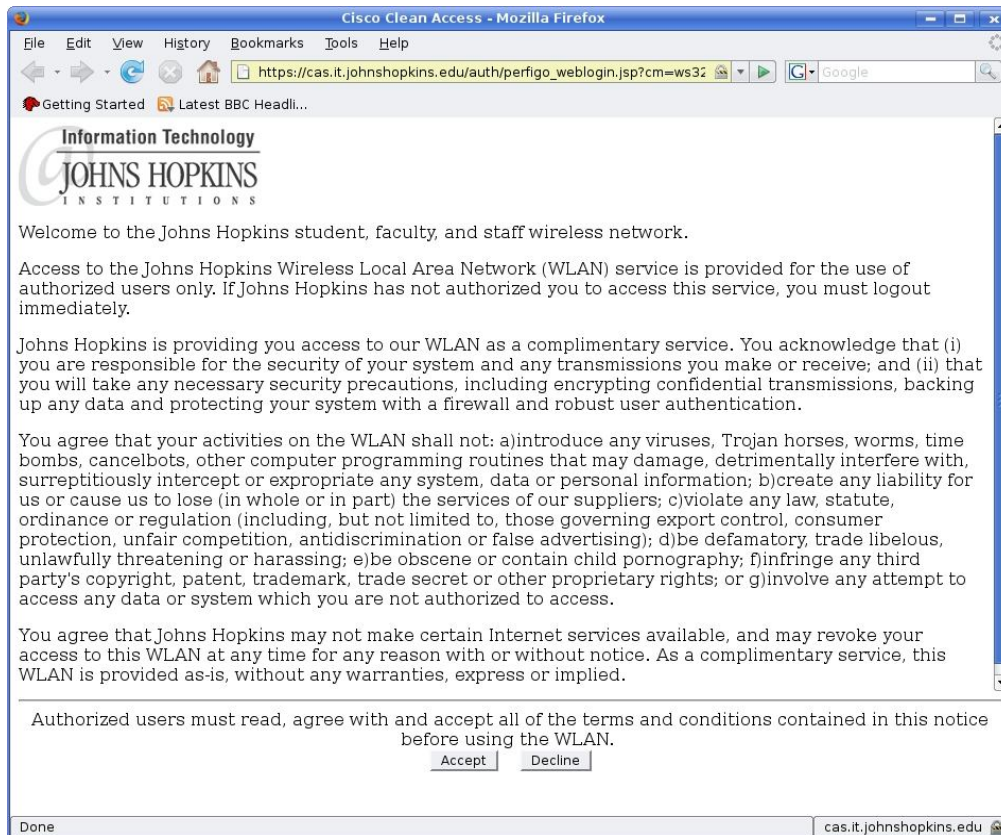


## Wireless @ Johns Hopkins

**Step 4:** If you are connecting for the first time, you will be prompted by the **KDE Wallet Service**. Enter a secure password. Click **Open**.



**Step 5:** You must open a web browser to accept the network agreement. You will automatically be redirected to the page. Click **Accept**, if you agree to the terms.



## Wireless @ Johns Hopkins

**Step 6:** Once you accept the terms, you will be redirected to your homepage. You can check your status from the panel.



### Where do I get additional help?

#### Homewood Campus:

##### **Technical Assistance**

Garland Hall Basement  
Hours M-F 8AM – 5PM

##### **Krieger Computer Lab**

*Krieger Hall Room 160*  
Hours Sunday 10AM through Friday  
10PM, Saturday 10AM – 10PM

#### **Contact the Support Center at:**

(410) 955-HELP [(410) 955-4357] Johns Hopkins East Baltimore  
(410) 516-HELP [(410) 516-4357] Johns Hopkins Homewood Campus  
(443) 997-HELP [(443) 997-4357] Johns Hopkins Mount Washington