

Wireless@JHU

Windows 2000

Wireless Network Services
3400 N.Charles St.
Garland Hall
Basement Suite 020

The Johns Hopkins University has expanded its wireless service and now offers a new network. The new network is named “standard”. The “standard” network wireless uses a basic level of encryption and authentication to provide a higher level of privacy and access.

Access to the Johns Hopkins wireless network will require a one-time registration into the Johns Hopkins Address Registration System (JHARS). Registration on The Johns Hopkins Registration System can only be done using your account entry from the Johns Hopkins Enterprise Directory (JHED). Your account entry will require your JHED login ID (LID) and password.

How do I find my JHED account information?

Step 1

Locate a system on the Johns Hopkins intranet: your system in your dorm room, the computer lab in Krieger Hall or the library.

Step 2

Open a web browser and go to

<http://jhed.jhu.edu> or <http://jhed.jhmi.edu>.

Step 3

Click the “Login” tab.

Step 4

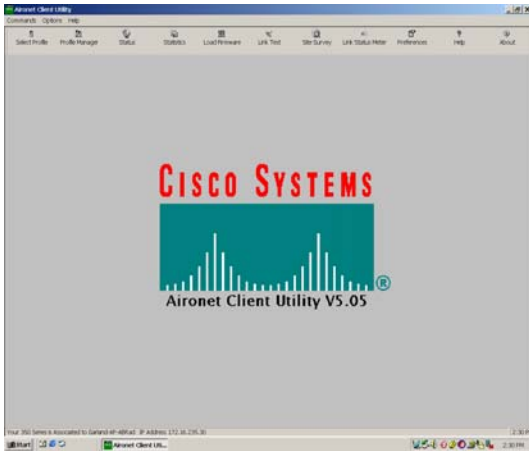
Follow the instructions on the login page to find out your Login ID and to set your password.

Step 5

Click on My Info tab and fill in a valid email address.

Click Save.

How to Configure Windows 2000

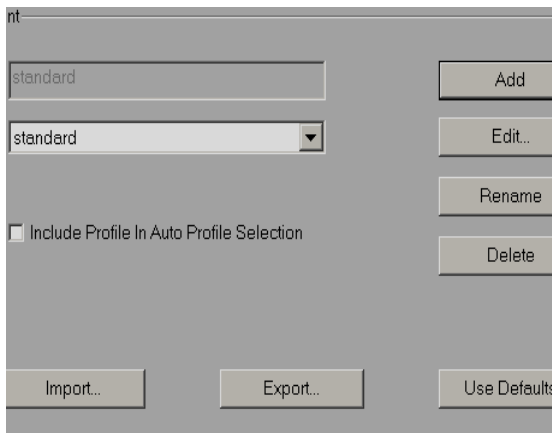


Example 1

The Cisco Aironet 350 Client Adapter driver and Aironet Client Utility must be installed to access these screens. Please refer to the web page for download and installation instructions.

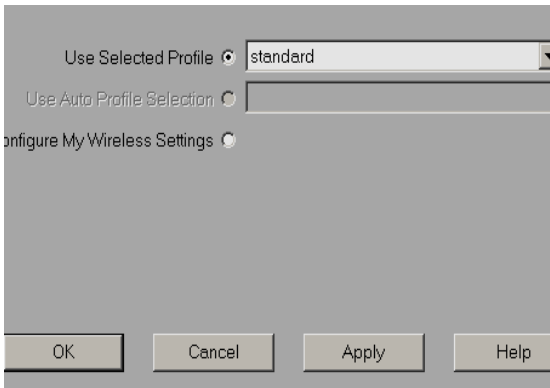
Refer to Example 1. From the Start Menu there will be a green icon with the letters ACU in it. Click it and Example 1 will show.

Click the Profile Manager. Refer to Example 2. Click the Add button and enter **standard** into the box that highlights white.



Example 2

Refer to Example 3. The “System Parameter” tab will be in front. Enter the SSID word **standard** in the SSID1 field. Click on the “Network Security” tab.

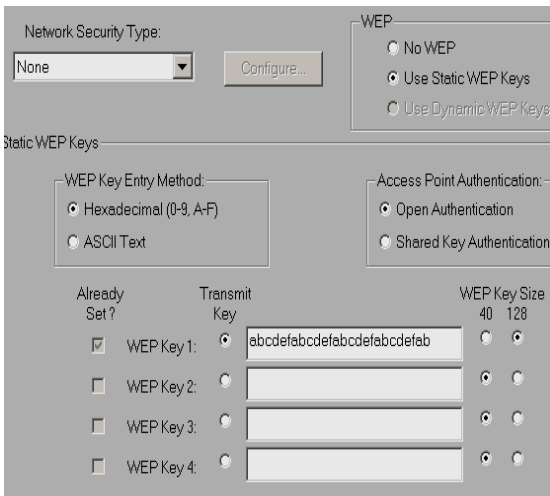


Example 3

Refer to Example 4. Click the radio button “Use static WEP Keys”. Enter the WEP key **abcdefghijklmnopabcdefghijklmnop** in the “WEP Key 1” box highlighted white. Click the “WEP Key Size 128 radio button. Click OK. Again click OK at the Profile Manager screen.

Close the Aironet Client Utility screen.

When you have successfully configured your wireless network and are within range of a Johns Hopkins access point you should see association to the access point and should be assigned an IP address by our DHCP servers that allow access to JHARS. Open a web browser and follow the steps on the back of the brochure under IP Address Registration.



Example 4

Notes:

Idle sessions are timed out for security reasons and will require re-authentication to use the wireless network.

IP Address Registration

The Johns Hopkins wireless network uses DHCP to assign IP addresses and associated services. The Johns Hopkins Address Registration System (JHARS) is used to register the hardware address (MAC address) with the DHCP servers.

- If the JHARS screen does not appear, type in <http://jhars.nts.jhu.edu>
- Configure your wireless network to associate to the Johns Hopkins' wireless network. Open a web browser. You will be directed to JHARS to register your system.
- Enter your JHED ID and JHED password.
- Select "Register for a dynamic IP address."
- Select your system type and operating system type from the pull down menus. Click Next.
- Select "Wireless" from the pull down list that include the building list. Enter the room. "Click Submit Request."
- The IP Address Registration is a onetime process and will not have to be done again for your device this semester. Reboot your system.

You may now open a web browser to access the network. At this point you will be prompted to logon to the network. Enter your JHED LID as your User ID and your JHED password for the password. This authentication will now take place every time you start a web browser session.

Where do I get additional help?

Contact the Support Center at:

(410) 955-HELP [(410) 955-4357]

(410) 516-HELP [(410) 516-4357]

(443) 997-HELP [(443) 997-4357]

Krieger Computer Lab

Krieger Hall Room 160

Hours Sunday 10AM through Friday
10PM, Saturday 10AM – 10PM

Technical Assistance

Garland Hall Basement
Hours M-F 8AM – 5PM