

## **Wireless @ JHU**

### **Apple Macintosh OS X**

Wireless Network Services  
3400 N. Charles St.  
Garland Hall Basement Suite 020

The Johns Hopkins University has expanded its wireless service and now offers a new network. The new network is named “standard”. The “standard” network wireless uses a basic level of encryption and authentication to provide a higher level of privacy and access.

Access to the Johns Hopkins wireless network will require a one-time registration into the Johns Hopkins Address Registration System (JHARS). Details for the registration are in the brochure. In addition, an account entry in the Johns Hopkins Enterprise Directory (JHED) is necessary. Make sure you have an active JHED account and know your Logon ID (LID) and password.

### **How do I find out my JHED account information?**

#### **Step 1**

Locate a system on the Johns Hopkins intranet: your system in your dorm room, the computer lab in Krieger Hall or the library.

#### **Step 2**

Open a web browser and go to <http://jhed.jhu.edu> or <http://jhed.jhmi.edu>.

#### **Step 3**

Click the “Login” tab.

#### **Step 4**

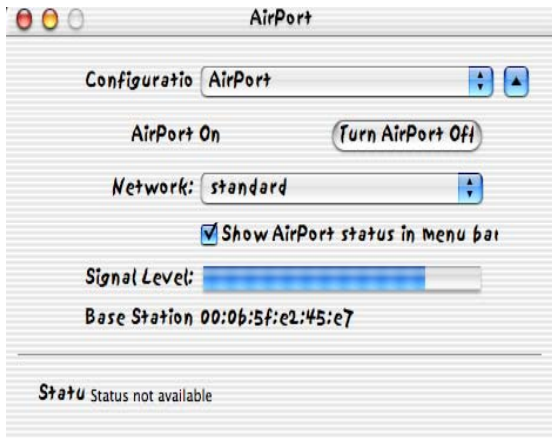
Follow the instructions on the login page to find out your Login ID and to set your password.

#### **Step 5**

Click on My Info tab and fill in a valid email address.

Click Save.

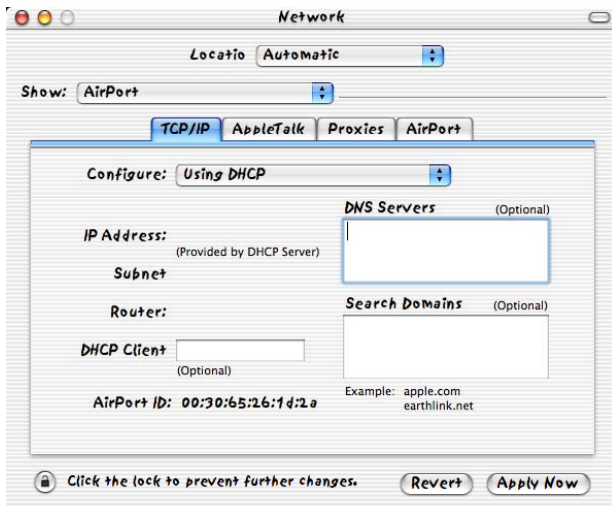
### ***How to configure Apple Macintosh OS X***



## Example 1

In the applications folder, click “Internet Connect”. Refer to Example 1. Select configuration: Airport. Click on “Turn Airport on.” Close the window.

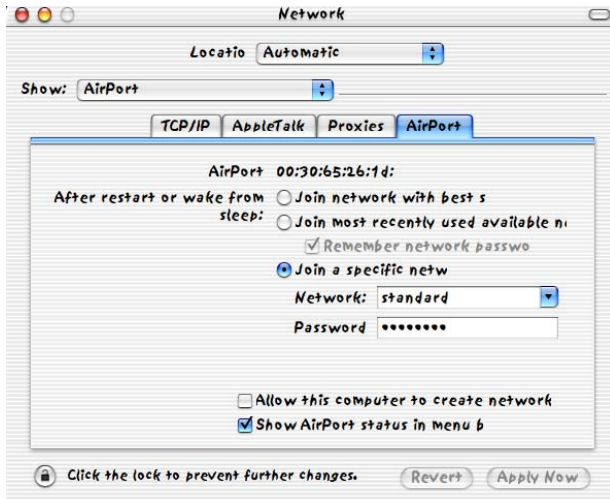
From System Preferences, click Network. Refer to Example 2. Select Location: Automatic. Select Show: Airport. On the TCP/IP Tab, Configure: Using DHCP. Click the Airport Tab.



## Example 2

Refer to Example 3. Select, Join a specific network.

Enter the word **standard** in the Network field. Enter the WEP key **abcdefghijklmnopabcdefghijklmnop** in the Password field. Click “Show Airport status in menu bar.” Click “Apply Now.” Close Window.



### Example 3

When you have successfully configured your wireless network and are within range of a Johns Hopkins access point you should see association to the access point and should be assigned an IP address by our DHCP servers to allow access to JHARS. Open a web browser and follow the steps under IP Address Registration.

### ***IP Address Registration***

The Johns Hopkins wireless network uses DHCP to assign IP addresses and associated services. The Johns Hopkins Address Registration System (JHARS) is used to register the hardware address (MAC address) with the DHCP servers.

- If the JHARS screen does not appear, type in <http://jhars.nts.jhu.edu>
- Configure your wireless network to associate to the Johns Hopkins' wireless network. Open a web browser. You will be directed to JHARS to register your system.
- Enter your JHED ID and JHED password.  
Click "Logon".

- Select "Register for a dynamic IP address."
- Select your equipment type and operating system type from the pull down menus. Click Next.
- Select "Wireless" from the pull down list that include the building list. Enter the room. "Click Submit Request."
- The IP Address Registration is a one-time process and will not have to be done again for your device this semester. Reboot your system.

You may now open a web browser to access the network. At this point you will be prompted to logon to the network. Enter your JHED LID as your User ID and your JHED password for the password. This authentication will now take place every time you start a web browser session.

## **Where do I get additional help?**

### **Contact the Support Center at:**

(410) 955-HELP [(410) 955-4357]

(410) 516-HELP [(410) 516-4357]

(443) 997-HELP [(443) 997-4357]

### **Krieger Computer Lab**

#### ***Krieger Hall Room 160***

Hours Sunday 10AM through Friday

10PM, Saturday 10AM – 10PM

### **Technical Assistance**

Garland Hall Basement

Hours M-F 8AM – 5PM