

Wireless@JHU

Windows XP

Wireless Network Services

3400 N.Charles St.

Garland Hall

Basement Suite 020

The Johns Hopkins University has expanded its wireless service and now offers a new network. The new network is named “standard”. The “standard” network wireless uses a basic level of encryption and authentication to provide a higher level of privacy and access.

Access to the Johns Hopkins wireless network will require a one-time registration into the Johns Hopkins Address Registration System (JHARS). Registration on the Johns Hopkins Registration System can only be done using your account entry from the Johns Hopkins Enterprise Directory (JHED). Your account entry will require your JHED login ID (LID) and password.

How do I find out my JHED account information?

Step 1

Locate a system on the Johns Hopkins intranet: your system in your dorm room, the computer lab in Krieger Hall or the library.

Step 2

Open a web browser and go to

<http://jhed.jhu.edu> or <http://jhed.jhmi.edu>.

Step 3

Click the “Login” tab.

Step 4

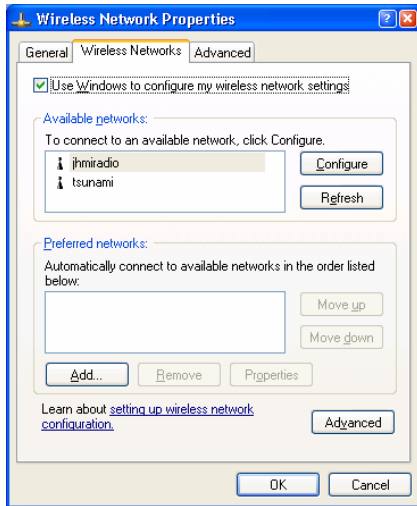
Follow the instructions on the login page to find out your Login ID and to set your password.

Step 5

Click on the My Info tab and fill in a valid email address.

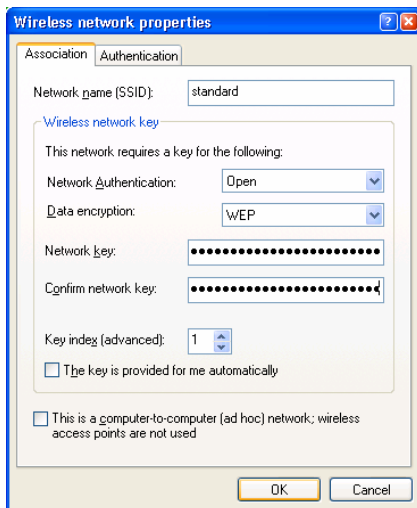
Click save.

How to configure Windows XP



Example 1

Refer to Example 1. From the Start Menu right click on “Connect To” and select “Open.” This will open a view on your available network adapters. Right click on the icon for your wireless adapter. Select Properties. This will open the configuration of your wireless adapter. Select the Wireless Networks tab. Click Add.



Example 2

Refer to Example 2. Enter the SSID word **standard** in the SSID field. Click on the “Data Encryption Box”. Clear the check box “The key is provided for me automatically.” Enter the WEP key **abcdefghijklmnopabcdefghijklmnop** in the Network key field. If there is a Confirm network key field, re-enter the key the same as above. If not, bypass the re-enter key. Click OK to create the preferred network. Then click OK to accept your changes.

When you have successfully configured your wireless network and are within range of a Johns Hopkins access point you should see association to the access point and should be assigned an IP address by our DHCP servers to allow access to JHARS.

Open a web browser and follow the steps under IP Address Registration.

IP Address Registration

The Johns Hopkins wireless network uses DHCP to assign IP addresses and associated services. The Johns Hopkins Address Registration System (JHARS) is used to register the hardware address (MAC address) with the DHCP servers.

- If the JHARS screen does not appear, type in <http://jhars.nts.jhu.edu>
- Configure your wireless network to associate to the Johns Hopkins' wireless network. Open a web browser. You will be directed to JHARS to register your system.
- Enter your JHED ID and JHED password.
- Select "Register for a dynamic IP address."
- Select your system type and operating system type from the pull down menus. Click Next.
- Select "Wireless" from the pull down list that include the building list. Enter the room. "Click Submit Request."
- The IP Address Registration is a one-time process and will not have to be done again for your device this semester. Reboot your system.

You may now open a web browser to access the network. At this point you will be prompted to logon to the network. Enter your JHED LID as your User ID and your JHED password for the password. This authentication will now take place every time you start a web browser session.

Where do I get additional help?

Technical Assistance

Garland Hall Basement
Hours M-F 8AM-5PM

Contact the Support Center at:

(410)955-HELP [(410)955-4357]
(410)516-HELP [(410)516-4357]
(443)997-HELP [(443)997-4357]

Krieger Computer Lab

Krieger Hall Room 160
Hours Sunday 10AM-Friday
10PM, Saturday 10AM-10PM